

ROOF SOLUTIONS

CATLADDERS

GANGWAY BRIDGES

FRAMES FOR COMPRESSOR AND CONDENSING UNIT

SUPPORTS FOR VRV/VRF SYSTEMS

SUPPORTS FOR CHILLERS AND AIR HANDLING UNITS

SMOKE EXHAUST FAN FRAMES

FIXING OF HORIZONTAL DUCT SECTIONS

PIPEWORK AND CMS FIXING

AIR CONDITIONER BASKETS

FIXING OF VERTICAL DUCT SECTIONS



SOLUTIONS FOR ROOFING AND FACADE OF BUILDINGS

WITH THE HELP OF UTECH INSTALLATION SYSTEMS, IT IS POSSIBLE TO REALISE SOLUTIONS FOR ROOFS WHERE IT IS IMPOSSIBLE TO FIX TO THE BASE MATERIAL WITH ANCHORS, AS WELL AS REALISE FIXINGS ON THE OUTSIDE OF THE BUILDING WHERE INCREASED CORROSION PROTECTION IS REQUIRED.

Examples of typical supports are shown below. Refer to UTECH technical solutions album for more technical solutions. Please get in touch with a UTECH engineer for such an album.



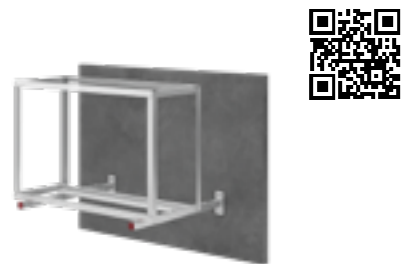
PIPE FASTENING



FIXING RECTANGULAR DUCTS



FIXING ROUND DUCTS



FIXING AIR CONDITIONER BASKETS



FIXING VERTICAL DUCTS



FIXING EQUIPMENT



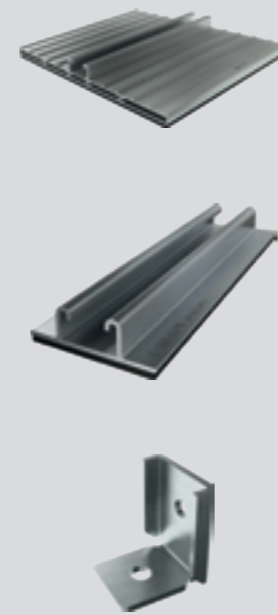
CATLADDERS



GANGWAY BRIDGES

BASIC ELEMENTS

SUPPORT ELEMENTS



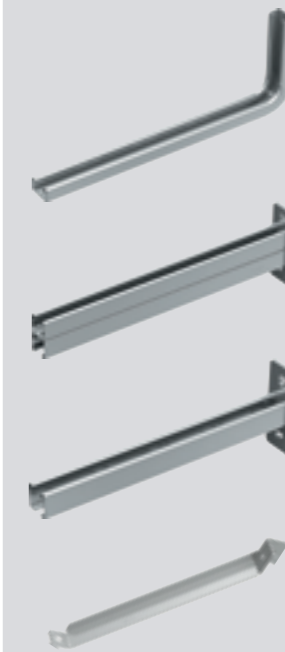
See section «Supports for soft roofs»

PROFILES



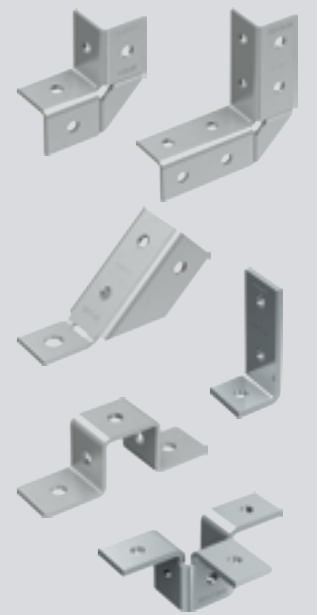
See section «Profiles»

BRACKETS



See section «Brackets»

CONNECTORS



See section «Connectors»

CONNECTING ELEMENTS



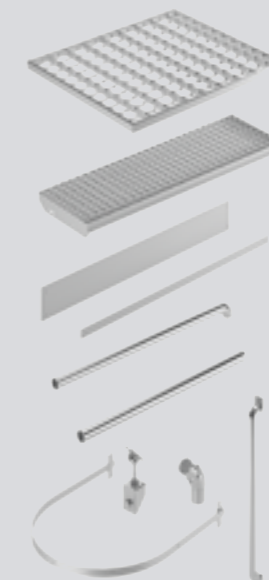
See section «Accessories»

CLAMPS



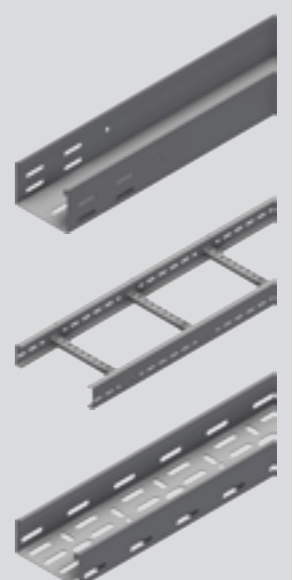
See section «Clamps»

ELEMENTS OF LADDERS AND PLATFORMS



Contact a UTECH engineer

CABLE TRAYS CMS



Contact a UTECH engineer

ADVANTAGES

- Supports are installed without disturbing the integrity of the roofing materials.
- High and consistent workmanship of the system components for extended service life and aesthetics
- Easy to install, adjustable and versatile solution that eliminates the need for welding
- Calculations of structures taking into account snow and wind effects in accordance with the Russian Federation norms using certified software.



INSTALLATION SYSTEMS

UTECH developers have created light but strong and convenient installation systems. Stiffening ribs and perforations on three sides not only make assembly highly convenient but also make it possible to create frame constructions with fewer connectors.

All technical characteristics and load-bearing capacity of the elements are calculated according to Russian codes and certified by the Kucherenko Central Research Institute of Structural Engineering.

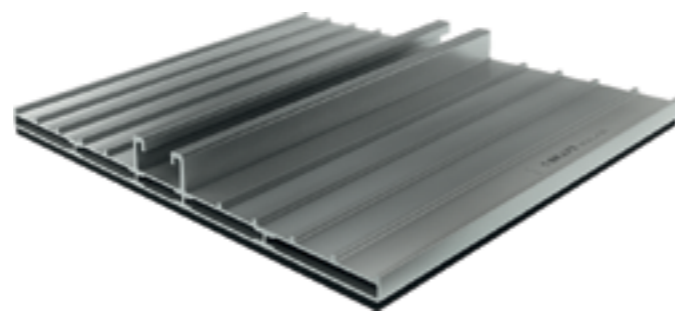
Every detail is thought out and specially designed to ensure reliability, ease of installation and high load-bearing capacity.

MT-B-LDP SUPPORTS FOR SOFT ROOFS

The supports are ideal for installing air conditioning units, gangway bridges, ventilation ducts, pipework or cable trays on flat roofs.

The profiles are simply connected to the fixing element using a fixing mounting nut. For flat and sloping roofs, there is an adjustment option of up to 10° to compensate for the roof slope. There is also a 360° rotation option for easy and quick installation of the profiles.

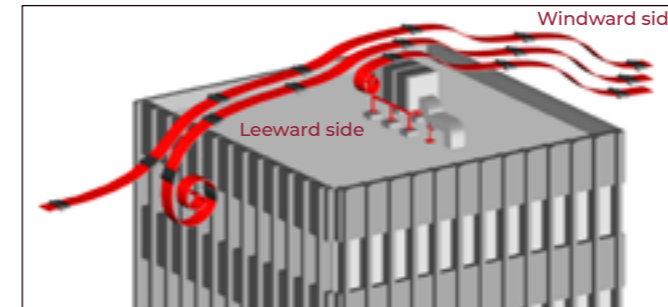
The hinged connection ensures even load distribution on the supporting surface..



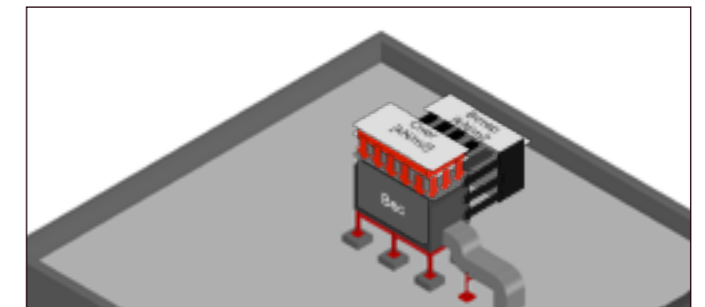
HOW TO CHOOSE A RELIABLE SOLUTION?

EQUIPMENT AND COMMUNICATIONS ON THE ROOF ARE EXPOSED TO VARIOUS NATURAL FACTORS. FOR CORRECT CALCULATION AND SELECTION OF ELEMENTS, LOADS FROM WIND, SNOW, AND PRECIPITATION ARE TAKEN INTO ACCOUNT. IF PROPERLY CALCULATED, THE STRUCTURES ARE DURABLE AND EXPENSIVE EQUIPMENT WILL RETAIN ITS INTEGRITY.

WIND IMPACT ON THE ROOF

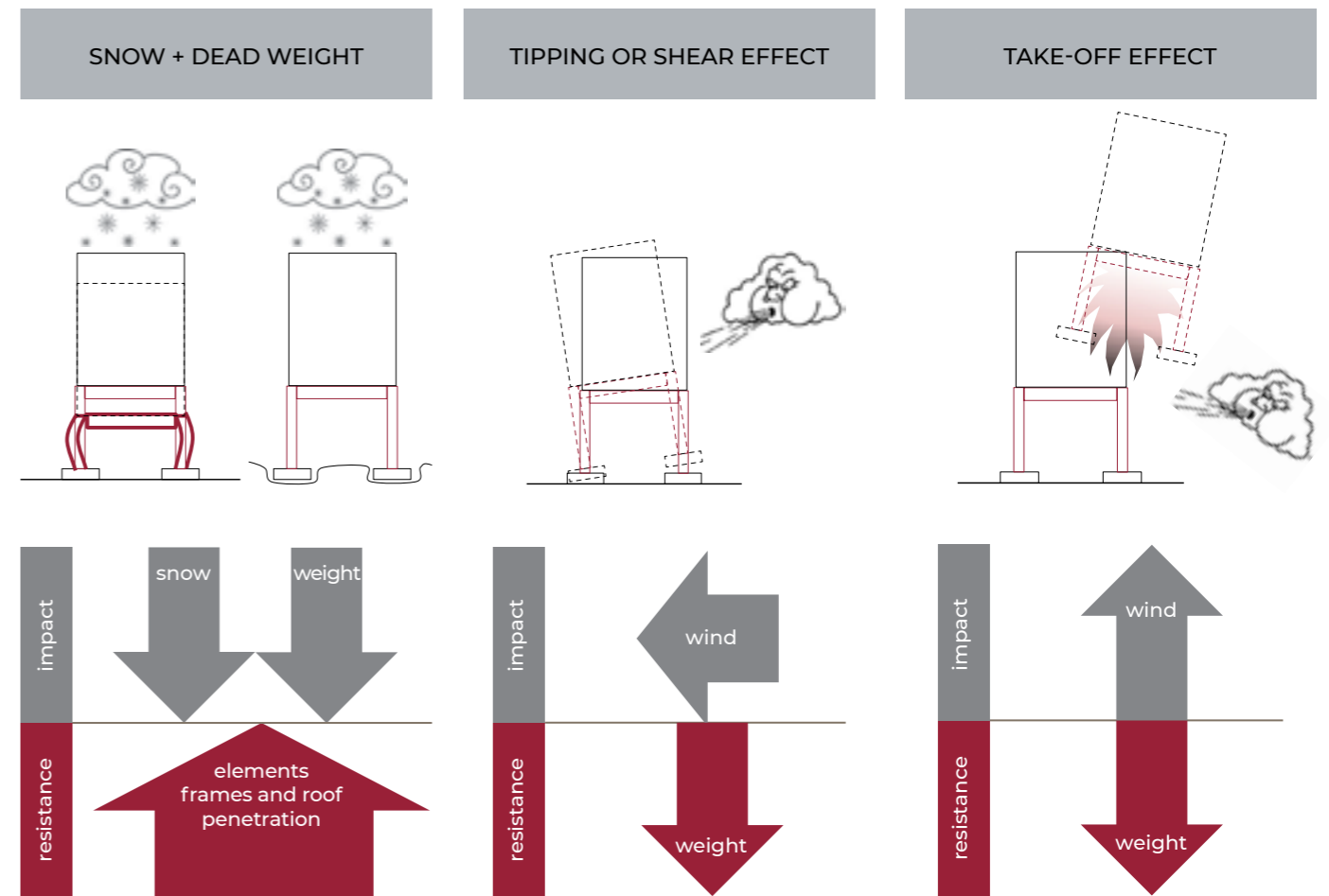


LOADS ON EQUIPMENT



LOADING OPTIONS TO BE CHECKED

THE FOLLOWING CASES MUST BE CHECKED AND SOLUTIONS CONFIRMED BY CALCULATION.



UTECH engineers are highly competent and carry out all necessary calculations to select the right design solution in a certified software package. If you need support, please get in touch with a UTECH engineer.