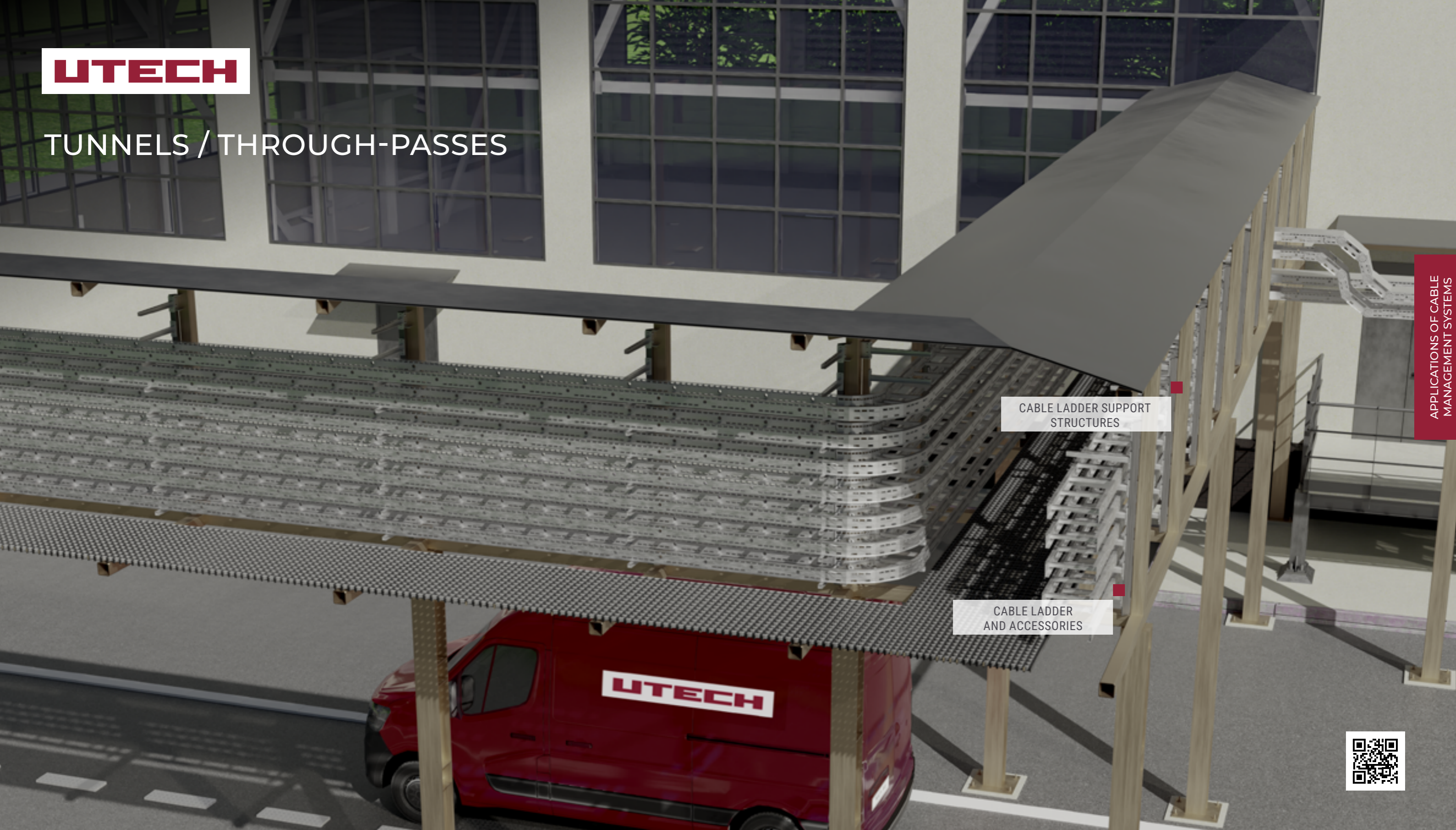


# TUNNELS / THROUGH-PASSES



CABLE LADDER SUPPORT  
STRUCTURES

CABLE LADDER  
AND ACCESSORIES



## TRANSMISSION TOWER APPLICATIONS:

- Routing of cables of any type on throughpasses.
- Routing of any type of cables in cable tunnels.

## ADVANTAGES OF UTECH SOLUTIONS FOR TRANSMISSION TOWERS:

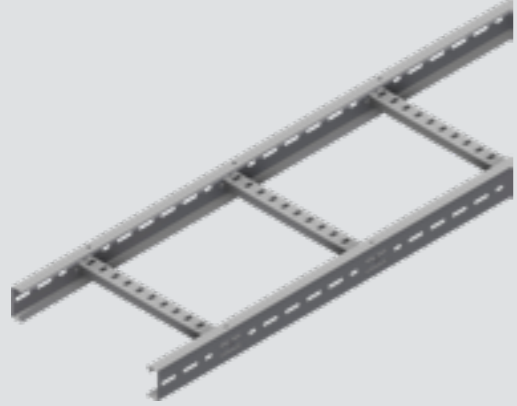
- Complete solution: the structural frame and elements of the CMS.
- The wide portfolio allows for changes in the direction of the network route and performs cable routing to the equipment.
- Installation systems for fixing trays make it possible to distribute cables by purpose and size, and to place them at different levels relative to each other.



MAIN ELEMENTS USED

**LOE CABLE LADDERS**

Height 55; 75; 100  
Width 200; 300; 400; 600



See section «LOE»

**LADDER ACCESSORIES LOE**

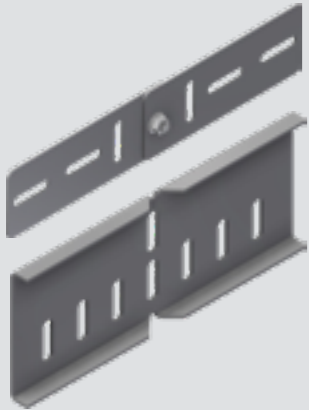
Height 55; 75; 100  
Width 200; 300; 400; 600



See section «LOE»

**HI-HO/HI-VE HINGES**

Simple and convenient solution for non-standard radii



See section «LOE»

**TAPE CLAMP**

Provides short-circuit protection up to 135 kA



See section «Clamps»

**CA-50 CANTILEVERS**

Lengths from 180 to 530 mm

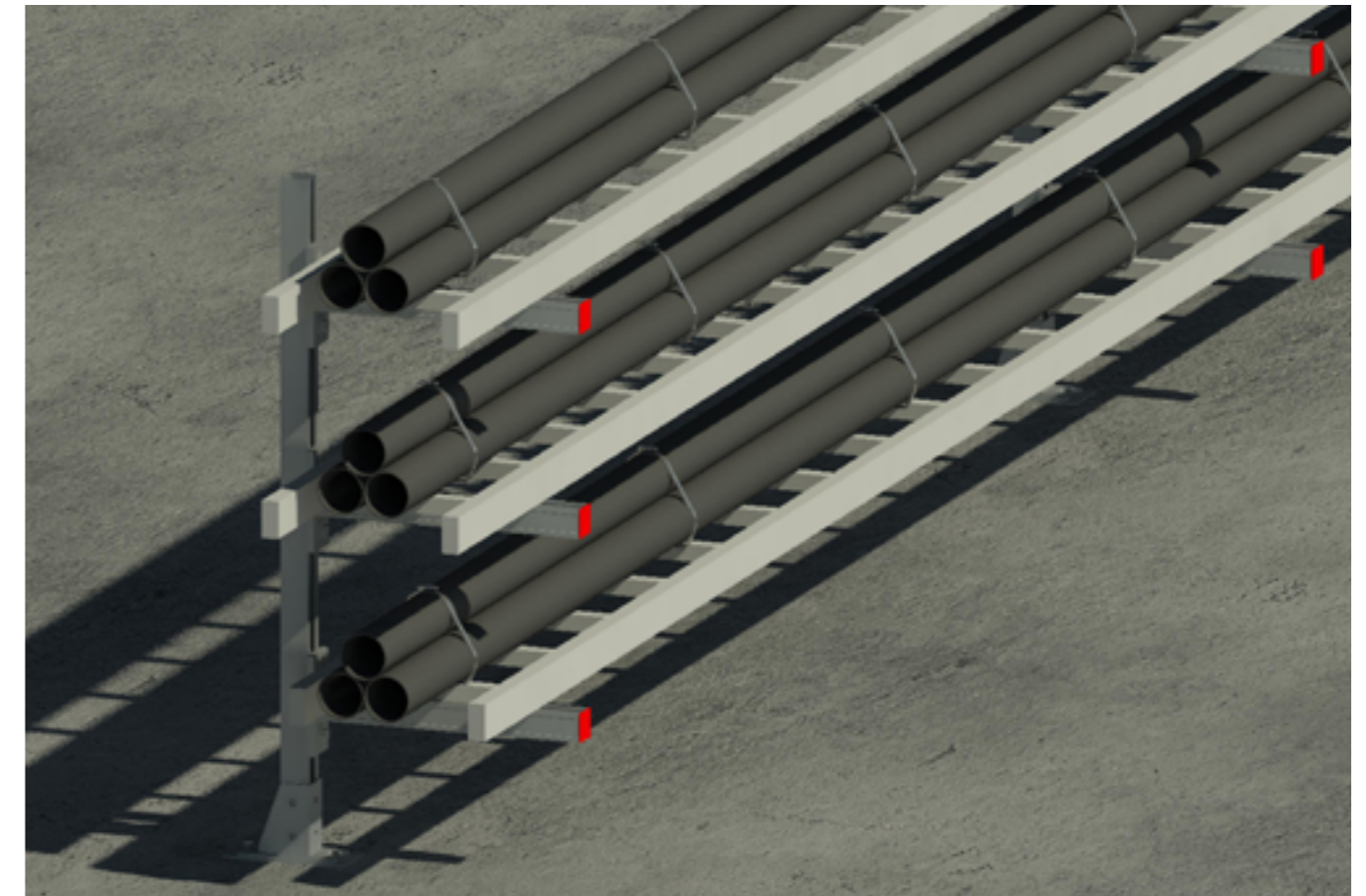
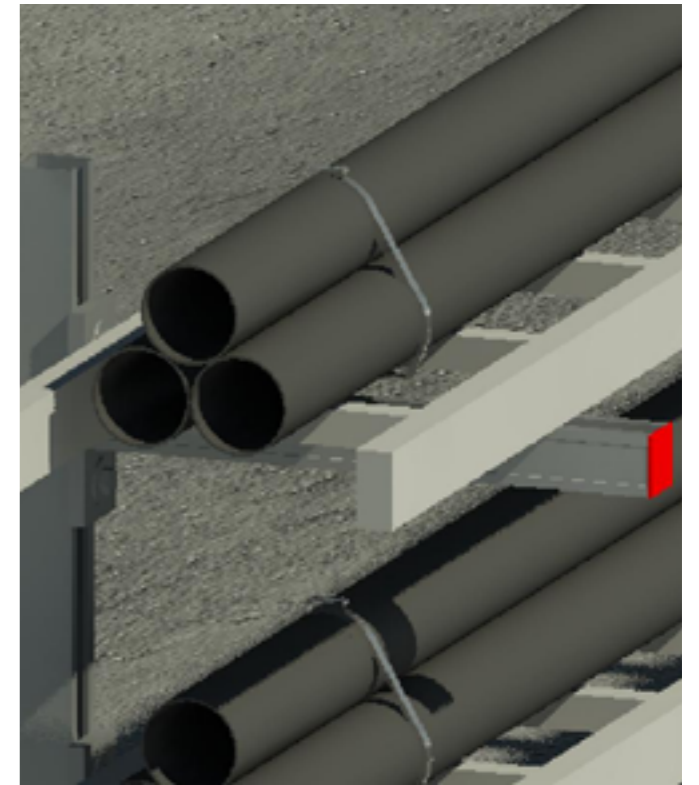


See section «CMS support elements»

CALCULATION AND DESIGN FEATURES

For the correct design of structures for routing high-voltage lines, it is important to take into account the following:

- weight, cable type and cross-section, turning radius;
- the minimum permissible but the most convenient distance between the tiers, taking into account the conditions of installation and operating conditions;
- wind load;
- icing load;
- the load that may occur during the operation of the structure:
  - a. Maintenance.
  - b. Additional cables.
  - c. Light fittings, etc.
- the forces generated on the support by the short-circuit current in the line;
- required minimum parameters of a cable trestle, including the distance between cables and shelves, according to
- Requirements for Electrical Installations and CoP 76.13330-2016;
- Individual needs of the customer, representatives of installation organisations, and operations.





CABLE LADDER LOE55 3 M LONG

Item No.	Name	Weight, kg/m
3858748	Ladder OS LOE55-M CL-200-3000 HDG	3,33
3858749	Ladder OS LOE55-M CL-300-3000 HDG	3,60
3858750	Ladder OS LOE55-M CL-400-3000 HDG	3,87
3858751	Ladder OS LOE55-M CL-500-3000 HDG	4,13
3858752	Ladder OS LOE55-M CL-600-3000 HDG	4,40

CABLE LADDER LOE75 3 M LONG

Item No.	Name	Weight, kg/m
3858773	Ladder OS LOE75-M CL-200-3000 HDG	3,83
3858774	Ladder OS LOE75-M CL-300-3000 HDG	4,08
3858775	Ladder OS LOE75-M CL-400-3000 HDG	4,37
3858776	Ladder OS LOE75-M CL-500-3000 HDG	4,63
3858777	Ladder OS LOE75-M CL-600-3000 HDG	4,90

CABLE LADDER LOE100 3 M LONG

Item No.	Name	Weight, kg/m
3858778	Ladder OS LOE100-M CL-200-3000 HDG	4,17
3858779	Ladder OS LOE100-M CL-300-3000 HDG	4,47
3858780	Ladder OS LOE100-M CL-400-3000 HDG	4,73
3858781	Ladder OS LOE100-M CL-500-3000 HDG	5
3858782	Ladder OS LOE100-M CL-600-3000 HDG	5,33

EXTERNAL JOINT CONNECTOR LOE55

Joint connector for mounting on the outside of the LOE cable ladder.  
Two connectors are required per connection.

Item No.	Name	Weight, kg/m
3858841	Connector OS LOE55 SC HDG	0,21

4 M6 x 12 locking bolts and nuts to be ordered separately.

HORIZONTAL BUTT CONNECTOR

Item No.	Name	Weight, kg/m
3859533	Connector OS LOE55 SC HDG	0,22

4 M6 x 12 locking bolts and nuts to be ordered separately.

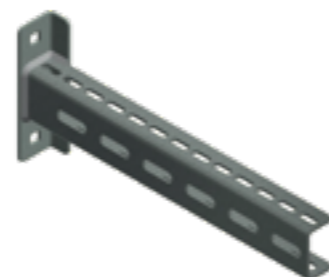
VERTICAL HINGE

Item No.	Name	Weight, kg/m
3859532	Hinge OS LOE55 HI-VE HDG	0,27

4 M6 x 12 locking bolts and nuts to be ordered separately.

CA-50 CANTILEVERS

Item No.	Name	Weight, kg/m
3847420	Bracket OS CA-50-180 HDG	0,56
3860119	Bracket OS CA-50-250 HDG	0,76
3860120	Bracket OS CA-50-330 HDG	0,90
3860121	Bracket OS CA-50-430 HDG	1,10
3860122	Bracket OS CA-50-530 HDG	1,40



CABLE TRAYS

